

# DrvWebHelper User Manual

## Introduction

This document will help you install "Extension Package" and how to use DrvWebHelper for printer driver extension function.

## Installation

1. Install printer driver by "DriverWizard.exe".
2. In "Details" page, confirm that "Install Extension Package(W)" check box is checked. (Picture-01)
3. Click next to finish installation.
4. You can check package in "C:\Users\Public\".
5. Installation complete if there is a "DrvWebHelper" folder.
6. You can also copy the whole "DrvWebHelper" folder to "C:\Users\Public\" from following path: "..\Driver\Printer Driver\".

## Startup

1. Right click target printer driver and click "Printer properties". (Picture-02)
2. Click "Tools" tab.
3. Input server ip and server port.
4. Click "Startup" button to start DrvWebHelper.exe.
5. Web browser will show up and connect to server.
6. You can also enter "C:\Users\Public\DrvWebHelper\", or "..\Driver\Printer Driver\DrvWebHelper\". Refer to "RunServer.bat", and double click this batch can startup server as well.
7. Run "DrvWebHelper.exe" in CMD without parameter can view more details.

## Usage: Download Logs

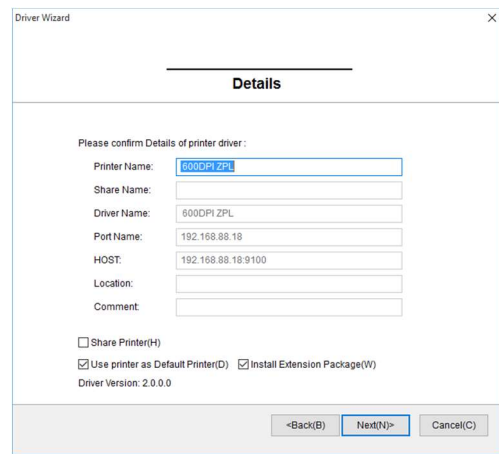
1. Select target printer at "Printer->Available" option. (Picture-03)
2. Check port name at "Connection->Port".
3. Click "Download" button to start download logs from printer.
4. Select a save as path in "Directory dialogue" (Picture-04)
5. You can check downloading status at "Connection->Status".  
Reload available printer list by click "Refresh" button.

## Others

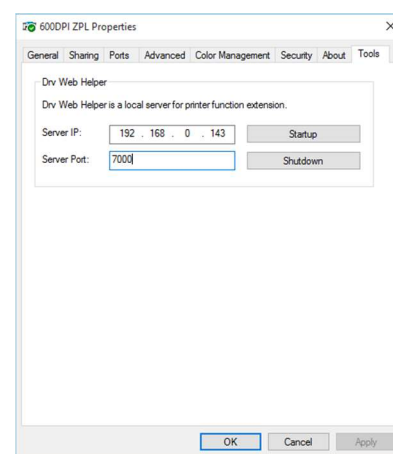
1. Startup fail if server's ip is invalid address.
2. "Windows Security Alert" will show up if server's ip is not "127.0.0.1".  
This windows must appear if software require network service.  
You can ignore it or click "Allow access". (Picture-05)
3. You can shutdown server by "Shutdown" button in "Tools" page, or close "DrvWebHelper.exe" directly.
4. "Connection->Address" is a reserve option.
5. Only support on USB and TCP/IP port for download logs.

## Pictures

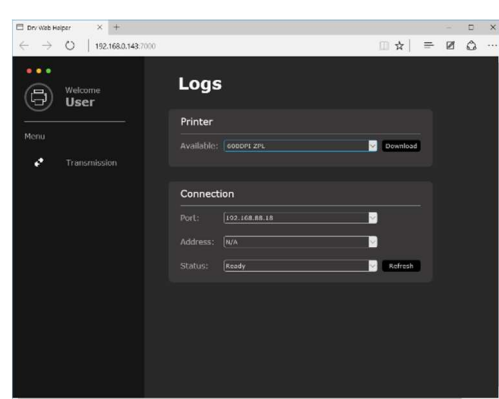
Picture-01



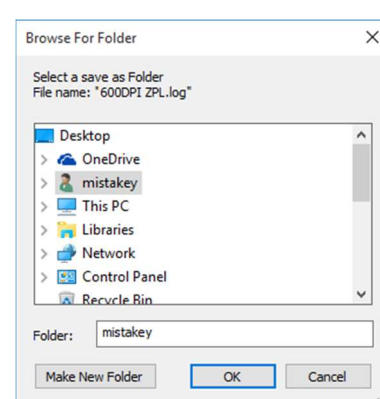
Picture-02



Picture-03



Picture-04



Picture-05

